



Property Description

TMS: 00240-01-001/ Hwy. 327

Lot Size: ± 241 total acres

Zoning: Not Zoned

Florence County

Utilities nearby to site

Major intersection US Hwy. 76

Easy access to Interstate 95

Rail-West Side ± 4,000 Feet
Rail-East Side ± 4,000 Feet

Great use for industrial development

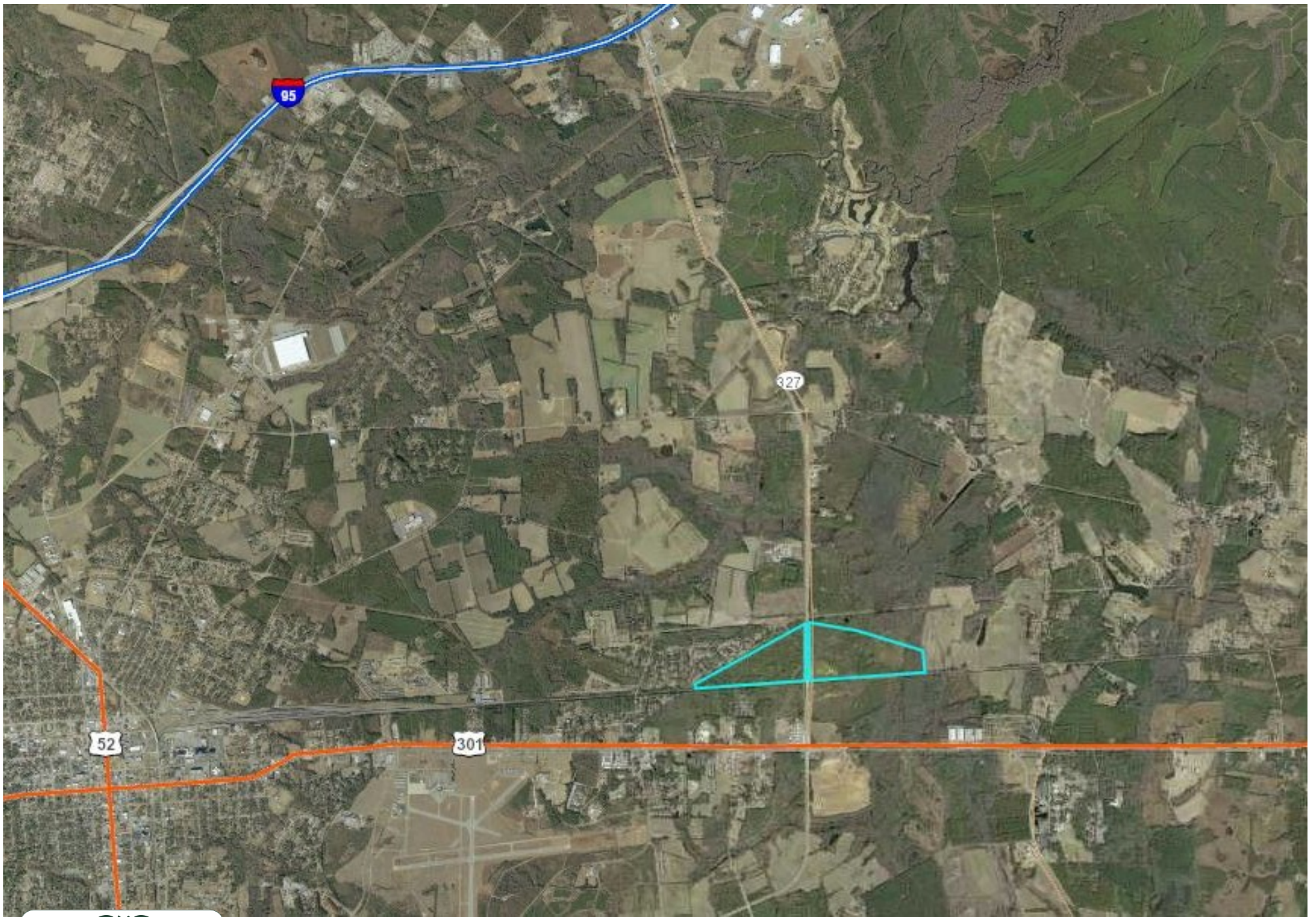
Ingress/egress onto Hwy. 327/ N. Williston Rd.

For Sale: West Tract ± 99 acres \$10,000 per acre
For Sale: East Tract ± 142 acres \$8,500 per acre



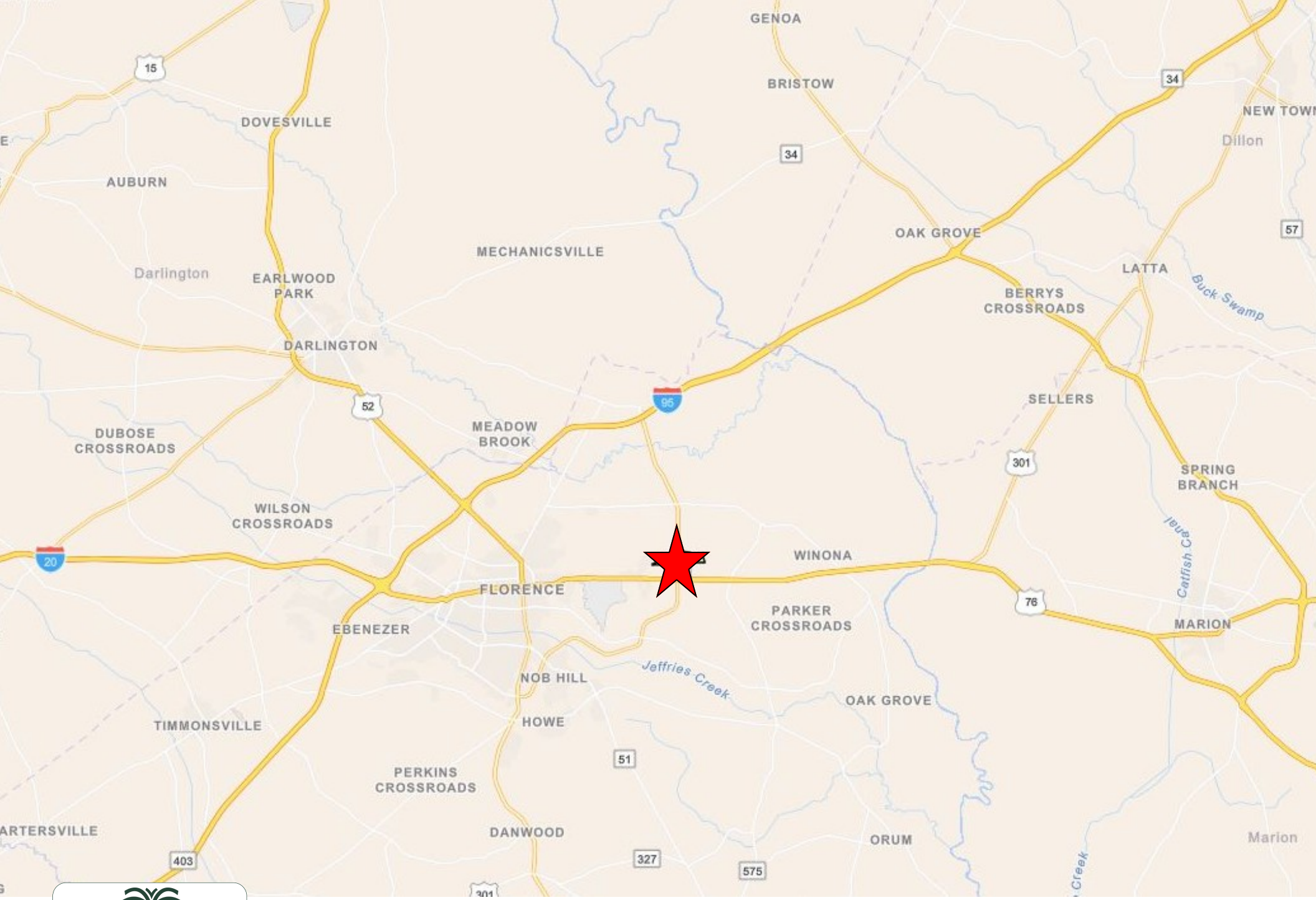
135 S Dargan St. Suite 301 | Florence, SC 29506 | Phone (843) 667-4999 |
Fax (843) 667-1310 | www.palmettocommercial.com

No warranty or representation is made as to the accuracy of the information contained herein.



135 S Dargan St. Suite 301 | Florence, SC 29506 | Phone (843) 667-4999 |
Fax (843) 667-1310 | www.palmettocommercial.com

No warranty or representation is made as to the accuracy of the information contained herein.



135 S Dargan St. Suite 301 | Florence, SC 29506 | Phone (843) 667-4999 |
Fax (843) 667-1310 | www.palmettocommercial.com

No warranty or representation is made as to the accuracy of the information contained herein.